

NUMBERS! NUMBERS! NUMBERS!

We were a very busy group in 2016. Check out our blanket numbers:

Angel Flight	14
Catherine Foundation	317
Charles Regional Medical Center	727
CC Health Dept. Infants & Toddlers Program	90
Children's Aid Society	50
Children's National Medical Center	324
Cobb Island EMS	22
Dentsville EMS	18
Fort Washington Medical Center	20
Hospice of Charles County	35
Individual Donations	14
Ironsides Rescue Squad	7
King George DSS	104
NDW Fire and Emergency Services (Indian Head)	12
Newberg EMS	16
The Promise Resource Center	13
SafeNights	8
Southern Md. Hospital Center	82
TAPS	56
Tri-County Youth Services	237
Wade Elementary School	<u>103</u>
TOTAL:	2269

Here are some interesting facts and figures about Project Linus:

Karen Loucks started Project Linus on December 24, 1995.

Project Linus nationally has been alive for 6,942 days as of January 1, 2017.

Project Linus National has had nonprofit status since May 12, 1997.

The Charles County Chapter of Project Linus donated 2269 blankets in 2016. Since we started, we have delivered 26,788 blankets!

Project Linus nationally has officially collected over 6,063,751 blankets as of January 1, 2017. If 60% of them are fabric, that translates into over 10,914,751 yards of fabric.

If 40% are afghans, that is over 19,404,003 skeins of yarn.

If each blanket is an average of 60" long, and we laid them end to end, they would stretch 30,318,755 feet or 5,742 miles. That is as tall as 1,044 Mt. Everests, or 17,071 One World Trade Centers or 24,255 Empire State Buildings or as long as 101,062 football fields!

Assuming each delivered blanket so far had a label, the cost for labels would be \$909,563.

AMERICAN LEGION AUXILIARY
POST 82

Attn: Angel Hindle, President
6330 Crain Highway
La Plata, MD 20646

APPLE SPICE JUNCTION

Loren Wash
6750 Crain Highway
La Plata, MD 20646
(301) 934-0034
www.applespice.com

BEST IMPRESSIONS

Jeff Griffith, President
400 North Washington Street
Alexandria, VA 22314
(703)518-1375

BJ'S WHOLESALE CLUB, INC

1000 St. Nicholas Drive
Waldorf, MD 20603

THE GREATER WALDORF
JAYCEE'S FOUNDATION, INC.

3090 Crain Highway
Waldorf, MD 20601

MARYLAND ASSOCIATION OF
REALTORS

200 Harry S. Truman Pkwy, Suite 200
Annapolis, MD 21401-7348

ORDER OF THE EASTERN STAR
GRACE CHAPTER 21

INDIAN HEAD, MD 20640

THE CELLULAR CONNECTION

(Verizon Store)
40 Drury Drive
La Plata, MD 20646

SOUTHERN MD ASSN. OF
REALTORS

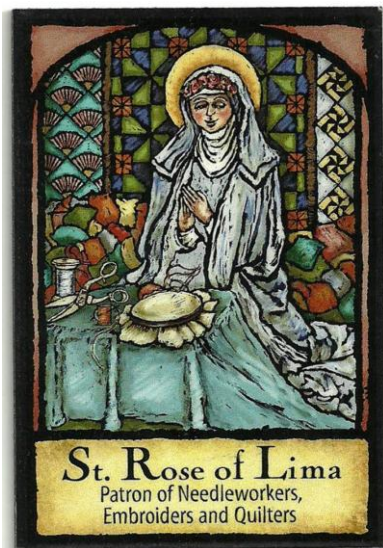
8440 Old Leonardtown Rd
Hughesville, MD 20637

WAL-MART OF LA PLATA

40 Drury Drive
La Plata, MD 20646

WESTLAKE VILLAGE
ASSOCIATION

3352 Old Washington Road
Waldorf, MD 20602



WHEN LIFE GIVES YOU SCRAPS,
MAKE QUILTS!!
(Afghans are good too!)

Mary Hancock, Coordinator
Project Linus - Charles County, MD
12010 Maryland Point Road
Nanjemoy, MD 20662
(301) 653-4893
CharlesCounty.MD@ProjectLinus.net
HancockMandD@gmail.com
www.ProjectLinusCharlesCoMD.com
www.facebook.com/ProjectLinusCharlesCoMD