

Project Linus

Providing Security Through Blankets

Charles County, MD Chapter

NEWSLETTER - 2013/14

“Small things, done with great love, bring joy and peace.”
Mother Theresa



OUR MISSION

- First, provide love, a sense of security, warmth and comfort to children who are seriously ill, traumatized, or otherwise in need through the gifts of new, handmade blankets and afghans, lovingly created by volunteer “blanketeers.”
- Second, provide a rewarding and fun service opportunity for interested individuals and groups in local communities, for the benefit of children.



First of all, our stats for 2013:

U of MD Charles Regional Medical Center	505
Childrens National Med Center	279
Catherine Foundation	258
Tri-County Youth	152
TAPS (Tragedy Assistance Program for survivors)	123
Charles County Emergency Med. Services	96
Oklahoma flooding victims	94
Southern Maryland Hospital Center	55
King George Dept. of Social Services	50
Charles County Hospice	40
Peoria, IL (Colorado/Illinois flooding)	33
Charles County Childrens' Aide	28
The Promise Resource Center	27
Ironsides Rescue Squad	25
Fort Washington Medical Services	24
King George Love Thy Neighbor	24
Angel Flight	16
Individual Donations	<u>8</u>

TOTAL BLANKETS DONATED IN 2013 1837

TOTAL BLANKETS DONATED TO DATE: 20,754

Wow!! We made it to 20,000+ blankets!! Time to CELEBRATE. Please mark your calendars for Wednesday, March 26 - 11:30 - for our celebration and volunteer appreciation day at JayCee's in Waldorf. More info will be forthcoming, but get it on your calendars now and plan to attend. JayCee's is providing a delicious lunch and hopefully we can enjoy some speakers, entertainment...who knows what else. It will be a great time for all the "old" timers and "new" timers to meet and share our Project Linus love! If you have attended all of our prior events, be there! If you have NEVER met any of us and have been supporting us in some way by making blankets, making donations...whatever the support...we want to meet you!! More information to follow via email closer to the event. If you wish to attend and do not have email, please contact me closer to March 26 for further info. (Contact info at end of this newsletter.)

Speaking of EVENTS. MAKE A BLANKET DAY (MABD) - Friday, February 21. Marathon blanket-making/having fun/working/socializing/eating/laughing/BLANKET-MAKING day. Come all day 9 to 4...or anytime in between that works for you. Our fave - APPLE SPICE JUNCTION - is donating lunch for the day...bring a bottle of water and get to work. We have materials to work on...or bring your own. We have blankets to string and tie, fleece to work on, counting, stacking, listing, plenty to do. Hope you will stop by and give us a hand. PLEASE RSVP on or before Fri, Feb. 14 to order lunch for MABD.



THANK YOU THANK YOU THANK YOU

First of all - I do so hesitate to list names, because I know I will forget some important person or organization - but I want to thank all the people and groups and organizations that have shown us support and made donations to our organization during the past year. We have received beautiful blanket donations from many, many individuals and groups such as the Relief Society and Young Women of The Church of Jesus Christ of Latter-day Saints White Plains First Ward, God's Next Generation Youth Group of St. Ignatius/St. Catherine's Church, the Prayer Shawl Group of St. Paul's Piney Episcopal Church, the Trinity Quilters at Trinity Baptist Church, District 2210 of T. J. Maxx, Girl Scout Troop 1895 in Waldorf, the St. Columba School Crochet Club, students at Gale Bailey Elementary School, and the Knitting Club Oxon Hill Senior High School. Want to thank also the "friends" who drop off blankets in our bins with no identifying info (we would love to thank you, so consider putting in name and address or email or both!), the Clark Center Blanketeers, the largest producers of our blankets, for all their work every Friday throughout the year, and Ms. Florence Robey and all the Clark Center employees who assist in so many ways. We have been getting donations from not only from Charles County, but also, Prince Georges, St. Mary's, Calvert, King George, Va., and, even New Jersey, Pennsylvania, and Florida!!! Thanks to you all! We have also gotten generous donations of money this year from various sources, such as Westlake Village Association, Walmart of Waldorf, Walmart of King George, American Legion Post 82 Ladies Auxiliary, Ladies of Charity of Holy Ghost Church, and Grace Chapter 21, Order of the Eastern Star. We also got a large donation from the mother of a child who received one of our blankets, when the mom organized a fund raiser at Children's National Medical Center where the blanket was received!! Thanks so much for your work and dedication, Jackie Santone! THANK YOU APPLE SPICE JUNCTION for our MAKE A BLANKET DAY LUNCH!!!! Please support them and let them know how much Project Linus appreciates them. ALSO, BJ's Warehouse gives us a gift card for almost all of our events, which I usually use to purchase the cake!!! AND also, to Jeff Griffith of Best Impressions printing of Alexandria, VA., who so generously prints and provides all of our tags which are attached to each blanket. THANKS TO ALL!!



If you do not wish to continue receiving this newsletter, if you know someone who wants to begin receiving this newsletter, or if you are receiving this via snail mail and have email that I could send it to, PLEASE contact me so that I can make the necessary changes - see contacts at the end of newsletter.



I feel like I am being a bit repetitious in this newsletter, but we have quite a few new "Blanketeers" and contacts so I feel compelled to include some of the same info that has been in past newsletters. So, here goes!

SPECIAL BLANKET "COLLECTIONS"

As we go through blankets at each meeting, we do sort according to the needs of the organizations (young children, teens, mixed, etc.).

We also sort out blankets for three special needs.

(1) We collect blankets that are patriotic in color and/or design. Most of these are donated to the Tragedy Assistance Program for Survivors (TAPS), (www.taps.org) which is a program *which organizes a "Good Grief" camp each Memorial Day to help children who are grieving the loss of a loved one in the military during the past year. Each child receives a Project Linus blanket as part of their experience at the camp. (Over 1,000 blankets were distributed at this camp in 2013, sent in from chapters all over the US)*

Some of these patriotic blankets also go to Operation: Military Kid...and occasionally to a special individual child where it is appropriate. These can be any patriotic theme, red/white/blue in color, and we have been told camo is very popular with these kids also, either fabric, or the camo-colored yarns if you are a crocheter or knitter.

(2) We sort out blankets with fire engine/ambulance/rescue themes to go to Charles County Emergency Medical Services, and

(3) We sort out airplane/helicopter themed blankets to be sent to the Angel Flight organization.



BLANKET GUIDELINES

Many of you have asked what size to make blankets. Below is a very variable guideline. THESE ARE **SUGGESTED SIZES ONLY**.....KIDS COME IN ALL SIZES!! Please do not feel compelled to cut blankets or knit or crochet to these exact sizes. Use what you have and make a blanket you think your child or grandchild would love.

- Infant 25" x 35"
- Toddler 35" x 45"
- Child 40" x 60"
- Teen 40" x 72"

PLEASE **DO**:

- ⇒ Use **NEW** machine washable/dryable fabrics
- ⇒ Leave us your contact information with your blankets if you drop off at one of the bins.
- ⇒ Launder blankets that have been exposed to pets to remove pet hair and/or dander.

PLEASE **DO NOT**:

- ⇒ EXPOSE THE BLANKETS TO CIGARETTE SMOKE
- ⇒ Attach bells, bows, buttons, snaps, ribbons or anything that could come off and harm a child. Ribbons woven in around the edges of blankets look beautiful, but are a hazard and will have to be removed.
- ⇒ Use wool, polyester double knits, upholstery or vinyl in the blankets.



Conference used to be just for Coordinators, but the past few years, all are invited. I am not sure whether I can go this year myself, but if you are interested, here is some info:

Conference FAQs

What IS Project Linus Conference? Project Linus Conference is 4 days of education, inspiration, fun and sharing all things Project Linus. Take part in classes, booths, lectures, and networking with chapters and volunteers from across the country.

Who can come to Project Linus Conference? Project Linus Conference is open to anyone interested in learning more, and sharing in the Project Linus experience. Attendees must be 16 or older. (Or have previous approval from PLHQ. We cannot accommodate small children.)

How much does it cost? Total all inclusive cost for 4 days has not yet been determined, but we expect it to be less than \$400

What about hotel accommodations? Conference is being held at the Marriott Hotel and Conference Center in Normal Illinois. You can make your reservations now by calling 888-

236-2427, or online at www.marriott.com. They have given us a special rate of \$134.00 single or double occupancy and are available while they last (be sure to use group code **plnplna** to get this rate). Reservations must be made by May 25, 2014.

Make plans now to join us in “Uptown” Normal, Illinois for “Camp Linus 2014” conference. You’ll love this quaint downtown area with an eclectic mix of dining, shopping and entertainment all within just a quick walk. At the Normal Marriott Hotel and Conference Center you will find Central Illinois’ finest lodging facility!

- **Details**When: June 18-21, 2014
Where: [Marriott Hotel & Conference Center](#)
201 Broadway St
Normal, Illinois 61761
Room Rate: \$134 single or double occupancy
be sure to mention group code plnplna

For further information on the 2014 Conference go to the National Website: www.ProjectLinus.org



IMPORTANT DATES - CHARLES COUNTY PROJECT LINUS:

- Feb. 14, 2014: NO REGULAR MEETING
- Feb. 14, 2014: DEADLINE TO RESERVE LUNCH FOR MABD
- Feb. 21 2014: **MAKE A BLANKET DAY!!!!!!!!!!!!!!**
Clark Center 9 a.m. to ?.
- Mar. 14, 2014: March Project Linus Meeting
Clark Center 10 a.m.
- Mar. 19, 2014 DEADLINE TO RSVP FOR MAR. 26.
- Mar. 26, 2014 **20,000 BLANKET CELEBRATION**
JayCees - Waldof
- Apr. 11, 2014: April Project Linus Meeting
Clark Center 10 a.m.
- May 9, 2014: May Project Linus Meeting
Clark Center 10 a.m. (Please bring TAPS blankets.)
- May 16, 2014: Deadline to have TAPS blankets to a Drop-Off Bin



MY CAUSE WATER

If you purchase My Cause water and follow the directions below, Project Linus Charles County will receive 5 cents per bottle. We also could win a monthly lottery, where all unassigned "nickels" could go to our organization. So far, over \$25,000 has gone directly to registered non-profits!

Our Purpose is to help you change the world! My Cause™ Water donates 5¢ to a cause of your choice for each bottle sold."

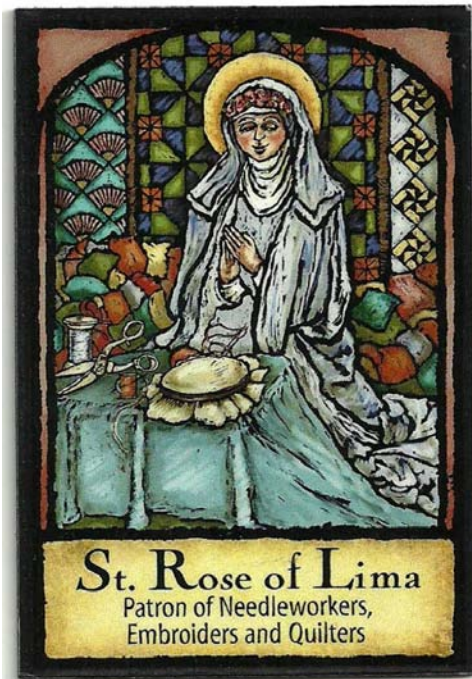


1. Buy the water.
2. Click to our web site here at www.MyCauseWater.com and select Project Linus Charles County Chapter (or any other cause you choose)
3. Enjoy sipping MyCause water, knowing that you've become a catalyst for change in the world.
4. Repeat Steps 1 through 3



Project Linus blanketeers are eligible for 10% discount at Jo-Ann Fabric and Craft Stores when making Project Linus blankets! You must have a Project Linus ID Card, which I can give you...just let me know if you need one and for instructions on getting your VIP discount card for Jo-Ann.

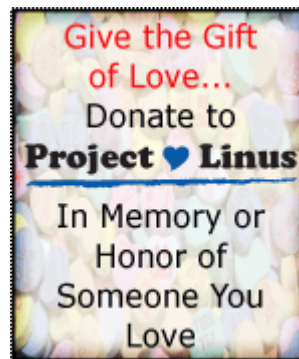




Check out the National Website at www.projectlinus.org to see what's happening at the National Organization level. You can click on Store, where you can purchase Project Linus-themed items such as t-shirts, tote bags, kits, post cards, books, etc.



•The Blanket Beacon is a newsletter that is sent out from National from time to time. Click [Blanket Beacon](#) to [Register to receive frequent newsletters from headquarters](#). to be on their mailing list.



WHEN LIFE GIVES YOU SCRAPS, MAKE QUILTS
(Afghans are good too!)



Mary Hancock, Coordinator
Project Linus - Charles County, MD
12010 Maryland Point Road
Nanjemoy, MD 20662
(301) 743-2114 home
(301) 653-4893 cell
CharlesCounty.MD@ProjectLinus.org
www.ProjectLinusCharlesCoMD.com

Let's support those who support us:

DROP-OFF BIN LOCATIONS

MATERIAL GIRLS QUILT.

The Henley Family
6750 B Crain Highway
La Plata, MD 20646
(301) 392-9575
www.materialgirlsquilt.com

THE HAIR GALLERY

Stephanie Walton

Bryans Road Shopping Center
P.O. Box 26
Bryans Road, MD 20616
(301) 283-6222

HANCOCK FABRICS

Sherry Shapiro
2920 Festival Way
Waldorf, MD 20601
(301) 645-4146

MICHELLE'S QUILTS

Michelle
8132 Old Leonardtown Road
Hughesville, MD 20637
(301) 274-1919
<http://www.michellesquilts.com>

APPLE SPICE JUNCTION

Loren Wash
6750 Crain Highway
La Plata, MD 20646
(301) 934-0034
www.applespice.com

BJ'S WHOLESALE CLUB, INC

1000 St. Nicholas Drive
Waldorf, MD 20603

THE GREATER WALDORF JAYCEE'S FOUNDATION, INC.

3090 Crain Highway
Waldorf, MD 20601

BEST IMPRESSIONS

Jeff Griffith, President
400 North Washington Street
Alexandria, VA 22314
(703)518-1375

SOUTHERN BLEND BARBERSHOP QUARTET

call Fred Parsons for booking info
(301) 910-8385

WAL-MART OF LA PLATA

La Plata, MD 20601

WAL-MART OF KING GEORGE

King George, VA

WESTLAKE VILLAGE ASSOCIATION

3352 Old Washington Road
Waldorf, MD 20602

AMERICAN LEGION AUXILIARY POST 82 -

Anna Mae Sackie
Crain Highway
La Plata, MD 20646